

# OnSite

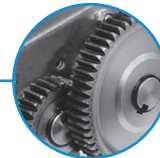
## Shred at the Source!



**AC Geared Motor:** Powerful, durable and built to outlast the competition



**LED Control Panel:** Easy to use with load indicator and energy-saving ECO Mode



**All-Metal Gears:** Heavy duty steel gears for high performance and minimal noise



**Heavy Duty Waste Bin:** Rugged molded plastic with a lifetime guarantee

## FD 8500HS

HIGH-SECURITY OFFICE SHREDDER



- Shreds up to 35 fpm, up to 5 sheets
- Cross cut shred size: 1/32" x 3/16"
- Meets NSA Requirements for P-7 Security
- LED control panel
- All metal cabinet with casters

# FORMAX<sup>®</sup>

[www.formax.com](http://www.formax.com)

Local Dealer:

## Commercial-grade components in a sleek, compact design ...

Formax **FD 8500HS** High Security Office Shredders offer **P-7 Security with a 16" feed opening**, combined with commercial-grade components in a sleek, practical design. An **easy-to-use LED control panel** puts the power right at your fingertips. The FD 8500HS Cross-Cut model can **shred up to 5 sheets at a time, up to 35 feet per minute**, with a shred size of 1/32" x 3/16". It has been evaluated by the NSA and meets the requirements of NSA/CSS specification 02-01 for P-7 high security cross cut shredders. In addition, the **ECO Mode** saves energy by automatically switching into standby mode after 5 minutes of inactivity. The optional **EvenFlow™ Automatic Oiling System** helps to keep the FD 8500HS in peak operating condition.



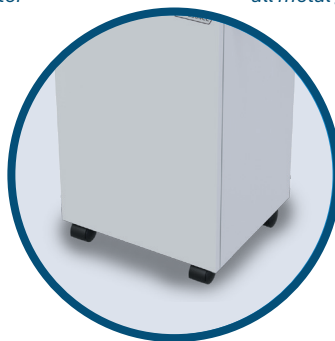
**User-friendly Control Panel**  
Auto Start/Stop/Reverse, Full Bin Indicator, Load Indicator



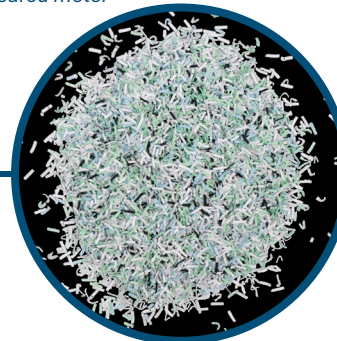
**Commercial Grade**  
Heat-treated solid steel cutting blades, all metal gears, & an AC geared motor



**Durable Waste Bin**  
Lifetime guaranteed rugged molded plastic for durability



**Rugged All-Metal Cabinet**  
Includes casters for mobility



**NSA/CSS P-7 Security:**  
Shreds "top secret" or classified documents into 1/32" x 3/16"

### OPERATING FEATURES

- P-7 security for top secret documents
- Extra-wide 16" feed opening
- Auto Start/Stop/Reverse
- LED control panel with load indicator
- ECO mode
- Door safety sensor
- Heat-treated steel cutting blades
- High quality geared motor
- Continuous-Duty motor
- Waste bin full sensor
- Lifetime heavy-duty waste bin
- Auto cleaning
- Manual function
- Thermal overload protection
- Safety circuit breakers
- All-metal cabinet with casters

### SUPPLIES

Cutting Head Lubricating Oil:  
#8000-9, six 8-ounce bottles

Shredder Bags:  
#8000-50, case of 100

### WARRANTY

Cutting Head: 90-day labor and  
1-year parts year warranty

All other parts: 1 year warranty

### OPTIONS

EvenFlow™ Automatic Oiling System

### SPECIFICATIONS

Cutting Style	Cross Cut
Shred Size	1/32" x 3/16" (.79 x 4.7mm)
Sheet Capacity	4 to 5*
NSA Durability test	10 reams / 4 sheets for 1 hour
Speed	35 fpm (10m)*
Feed Opening	16" (41cm)
Dimensions	24" W x 20" D x 35" H (61 x 51 x 89cm)
Bin Capacity	26 gal (98l)
Weight	242 lbs (110kg)
Security Level	P-7
Certifications	UL Approved, EPL Listed
Power Supply	110V, 50/60Hz

\* Sheet capacity varies depending on paper and power supply