

cmColor

RIP & Workflow Software

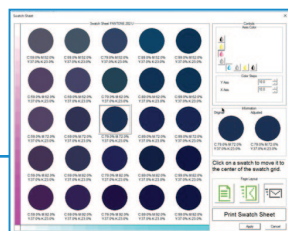
Version 3.0

Professional Print Quality with State-of-the-Art Harlequin® RIP

Formax **cmColor RIP & Workflow Software** combines tools for color management, spot color matching, hot folders and production job presets, with the powerful Harlequin® RIP engine to provide a seamless workflow solution. Cutting-edge features include a web browser-based interface, and ability to process PDF 2.0 file formats, and support for Windows 10.

cmColor provides color consistency and accuracy for creative and production-oriented users for projects and short-run print jobs. User-friendly features include Variable Data Management with the capability to merge variable PDFs with static PDFs and other graphics, built-in ICC profiles, and advanced color management and spot matching.

cmColor Software is designed to be used with the ColorMax7 and ColorMax8 Digital Color Printers, and is ideal for both businesses and commercial printers. Utilizing these state-of-the-art tools, cmColor helps manage jobs and deliver professional color output, time after time.



FORMAX®

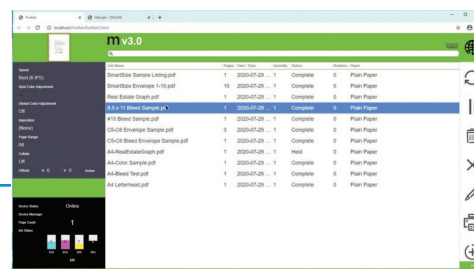
Fred Jones
Account Executive
fjones@formax.com
800-232-5535

FORMAX®

Fred Jones
Account Executive
fjones@formax.com
800-232-5535

Advanced Color Management & Spot Matching

cmColor RIP automatically identifies spot colors in an image, allowing users to easily edit, adapt and match existing color specs. During the process, users can print color swatches on material, compare, adjust the colors, save the changes per job or globally, then proceed to printing.



Enhanced Workflow Productivity

The new web browser-based interface allows users to submit, manage and preview jobs from anywhere on the network using a MAC® or PC. cmColor stores and saves print files and configurations for future use, making repeat jobs quick, easy and consistent.

Server requirements vary based on production volume demands and number of client and RIP connections. Recommendations do not include the requirements for other workstation software.

Recommended System Requirements - cmColor Server PC

Windows PC running Windows 10 Pro with full admin rights

64 bit operating systems only

3 GHz Dual/Quad Core Processor (SSE 4.2 required). Core i5 or i7 recommended

4 GB RAM. 8 GB or higher is recommended

160 GB hard drive. 500 GB or higher is recommended

DVD ROM drive

100/1000 Network Interface Card with an active "network" connection

2 available USB 2.0/3.0 ports

For best performance, Formax recommends that cmColor Server software be loaded onto a dedicated computer.

Recommended System Requirements - cmColor Client PC

Windows PC running Windows 7 Pro, Windows 8/8.1 Pro, Windows 10 Pro

2 GHz Dual Core or higher Processor

DVD ROM drive

4 GB RAM

100/1000 Network Interface Card (Macintosh Catalina is not supported)

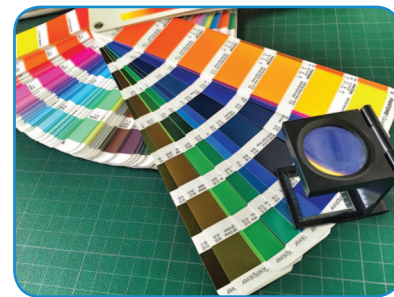
NOTE: The computer running cmColor Client PC must have full communication and file sharing rights with the Windows PC running the cmColor Server.

Recommended System Requirements - cmColor Client MAC® OS X

OS X 10.7 - 10.11

4 GB RAM or more

NOTE: Macintosh Catalina is not supported



Built-in ICC profiles provide the highest quality output on a wide variety of papers, including standard grade envelopes, office paper, inkjet gloss and matte finish stock and inkjet envelopes.



Advanced color management for professional color output, time after time



Access cmColor directly from the ColorMax8 touchscreen, to easily edit and print jobs directly from the printer

cmColor Software is designed to integrate seamlessly with Formax ColorMax7 and ColorMax8 Digital Color Printers



Formax - New Hampshire, USA
www.formax.com