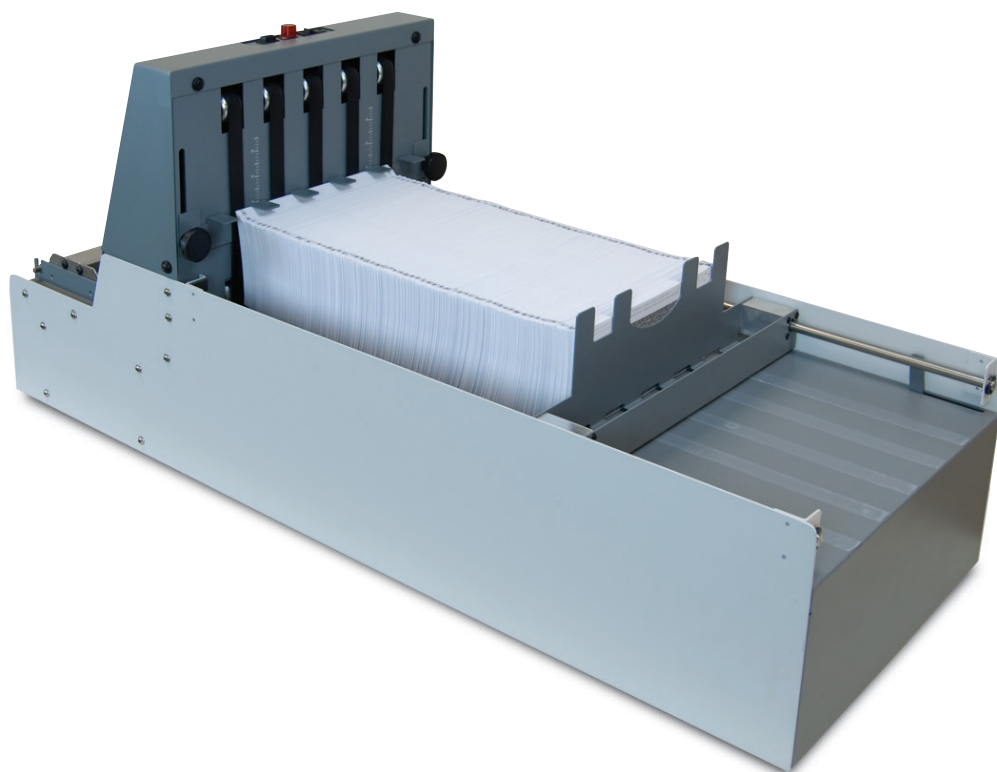
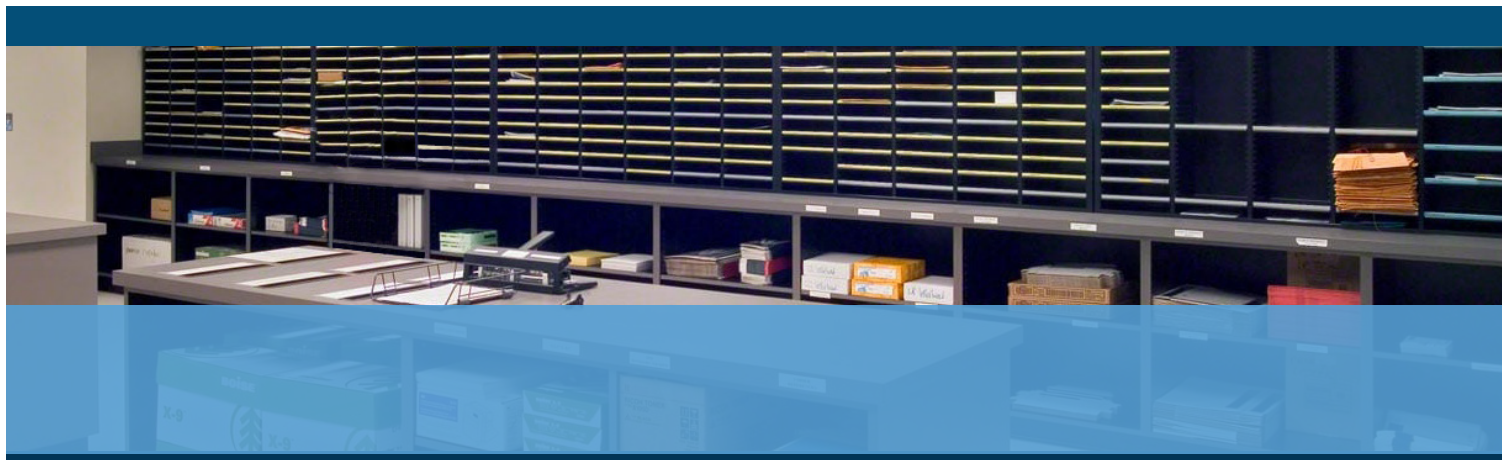




V-Stack36i

VERTICAL STACKER



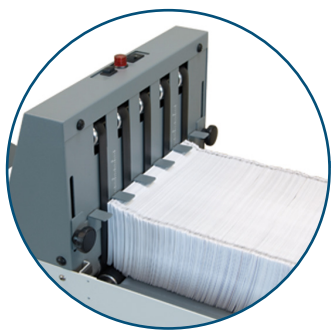
- Neatly stacks up to 22" of folded documents
- Compatible with various folders and pressure sealers
- Photo eye activation
- Guide wheels and 6-ball-roller deck for accuracy
- Interlock automatically stops source machine

FORMAX[®]

www.formax.com

Local Dealer:

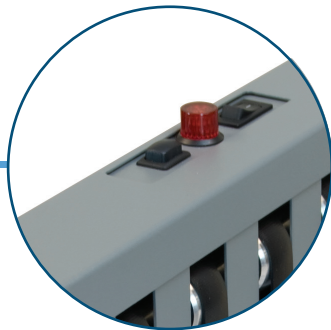
The **V-Stack36i Vertical Stacker** is designed to work with high-capacity pressure sealers and tabletop folders. Unlike a traditional outfeed conveyor, it **stacks forms vertically**, creating a neat stack which is easier to unload. The infeed features a **six-ball-roller deck** and **two guide wheels** to ensure forms enter the stacker smoothly, and a **photo eye** for activation. Its **vertical paper stop** adjusts to accommodate document/fold sizes up to 12" W and up to 7" H. An **interlock** is available for FD 2056 and 2300 Series Pressure Sealers and FD 38Xi Folders*, which automatically stops the stacker and the source machine when the stacker is full. A **height-adjustable stand** with locking casters is available to align with a variety of inputs.



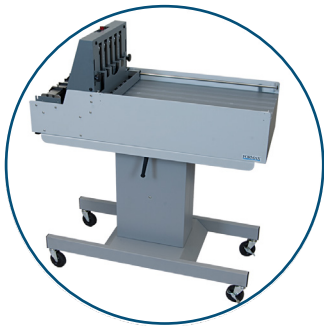
Adjustable Vertical Paper Stops
Accommodates document sizes
and fold types up to 7" H



Guide Wheels and Rollers
Six-ball-roller deck and guide wheels
ensure forms enter the stacker smoothly



LED Indicator & Run Out Button
Alerts when the stacker is almost full,
clears documents for easier unloading



Optional V-Stack36-10 Stand
Adjustable height with
casters for mobility



*Sample Configuration***
V-Stack36i with optional stand,
FD 2056 pressure sealer, and cabinet

STANDARD FEATURES

- Neatly stacks up to 22" of folded documents
- Photo eye activation
- LED indicates when stacker is almost full
- Six-ball roller deck and two guide wheels
- Run-out switch for easier unloading
- Vertical paper stop adjusts to media up to 7" H
- Spring-loaded horizontal paper stop
- Interlocks with FD 38Xi, FD 2056, 2300 Series
- Works with other table top pressure sealers*

OPTIONS

- V-Stack36-10 Adjustable-Height Stand**

SPECIFICATIONS

Speed	Variable, depending on input machine
Capacity	Up to 22" of folded documents, approximately 1,500 sheets
Dimensions	16" H x 37.25" W x 14.5" D (41 x 95 x 37cm)
Folded Form Dimensions	Up to 7" H x 12" W (178 x 305mm)
Height with Adjustable Stand**	41.5" to 45.5 (floor to top of stacker) (105 to 116cm) 30" to 34" (floor to infeed deck) (76 to 86cm)
Weight	73 lbs (33kg)
Weight With Stand	122 lbs (55kg)
Power	110V, 50/60Hz
Made in USA	

* Contact your Formax Dealer for compatibility with additional equipment.

** Stand is optional for tabletop folders and pressure sealers. Stand is required to align V-Stack36i with Production Pressure Sealers.