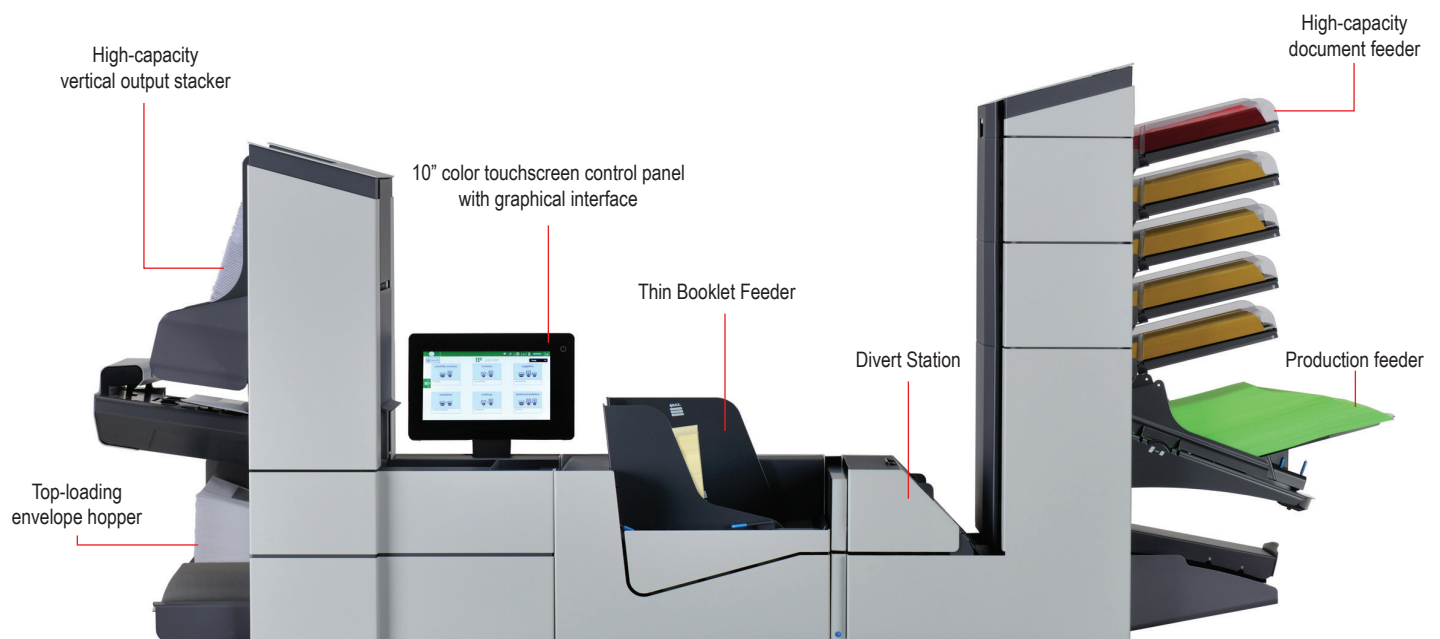
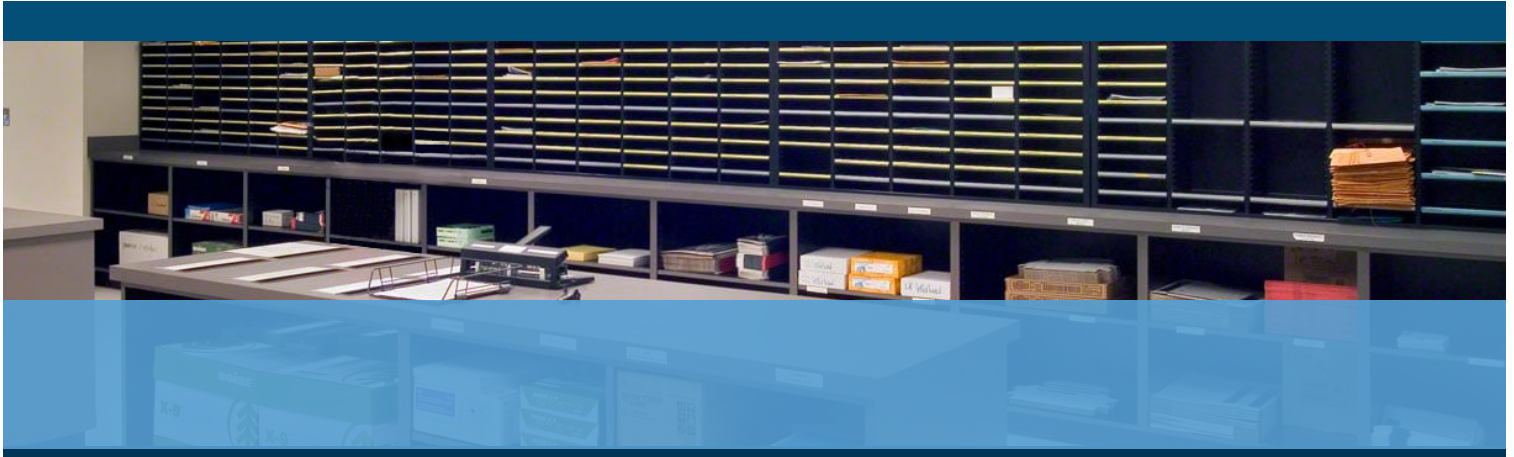




6608 Series

MODULAR INSERTER SOLUTION



- Modular, 10 configurations available
- High-capacity vertical output stacker
- 10" color touchscreen control panel
- Up to 50 programmable jobs
- Top-loading envelope hopper

FORMAX[®]

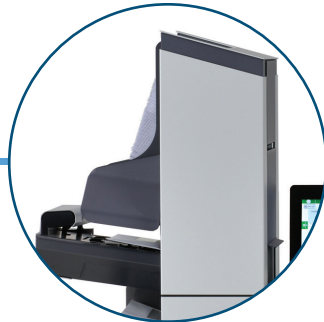
www.formax.com

Local Dealer:

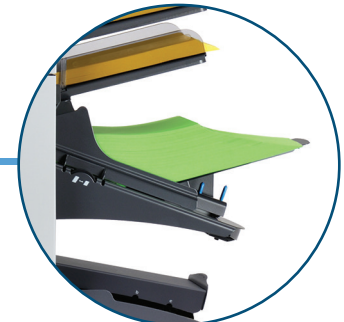
The **6608 Series** models are available with 2 to 7 stations. Various input configurations include a **high-capacity document feeder** for up to 725 sheets, 1 or 2 high-capacity **production feeders**, **standard and special feeders**, **short feed trays**, and one or two **thin booklet feeders**. Standard features include a **10" touchscreen with envelope and paper presence sensors**, a **high-capacity vertical output stacker**, a **top-loading envelope hopper**, **AutoSet™**, a **divert station**, and the ability to store **up to 50 custom jobs**. Options include a **full-page CIS Scanner** to read OMR, 1D Barcodes, 2D Data Matrix, and QR codes, printed in any location on a document.



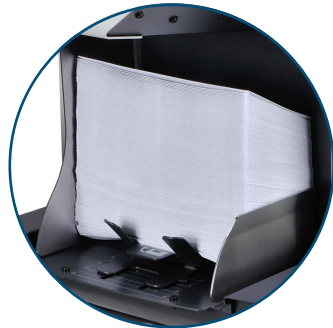
10" Intuitive Color Touchscreen
Graphic interface for easy setup, with paper and envelope presence sensors



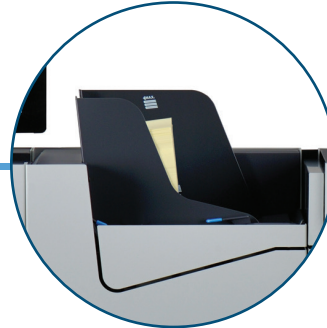
High-Capacity Vertical Stacker
Holds up to 500 filled envelopes in a neat, sequential order



Optional Production Feeder
Holds up to 325 BREs or 1,200 inserts up to 6" long



Top-Loading Envelope Hopper
Holds up to 500 envelopes with on-the-fly reloading for continuous operation



Optional Thin Booklet Feeder
1 or 2, each dedicated feeder inserts BREs or booklets up to 2.5mm thick

STANDARD FEATURES

- 10" intuitive color touchscreen
- Modular flexibility
- AutoSet™ one-touch setup
- Envelope & paper presence sensors
- High-capacity vertical output stacker
- Up to 50 programmable jobs
- Handles a variety of envelope sizes
- Large, top-loading envelope hopper
- C, Z, half, double parallel, no fold
- Daily mail mode
- Multi-feeding
- Cascade mode
- Folds up to 10 sheets at once
- Variable insert capability
- Eco mode
- Double document detection
- Divert station

OPTIONS

- CIS scanner
- Thin booklet feeder
- Production feeders
- Side exit trays
- OMR, BCR, and OCR
- Short feed trays
- Custom cabinets
- 402 Series Jogger

** Paper & envelope specifications may vary. All media must be tested*

*** Bottom-address documents can be processed only in half and z-fold modes, up to 5 sheets*

SPECIFICATIONS

Speed	Up to 4,300 pieces per hour
Duty Cycle	Up to 80,000 pieces per month
Feeder Capacity	Up to 325 sheets, per feeder
Envelope Hopper	Up to 325 envelopes, top-loading
Vertical Output Stacker	Up to 500 filled envelopes
Sheet Size*	3.5" - 14" H x 5" - 9" W (89 x 356 x 229mm)
Programmable Jobs	Up to 50
Envelope Size*	6.3" - 9.7" L x 3.5" - 6.3" W (160 - 246 x 89 - 160mm)
Dimensions	60" L x 31" H x 18" D (152 x 79 x 46cm)
With 1 Thin Booklet Feeder	79" L x 31" H x 18" D (200 x 79 x 46cm)
Weight	Approx. 242 lbs (110kg)
Power	100V/120V AC 50/60Hz
Safety Certifications	UL, CE, approved