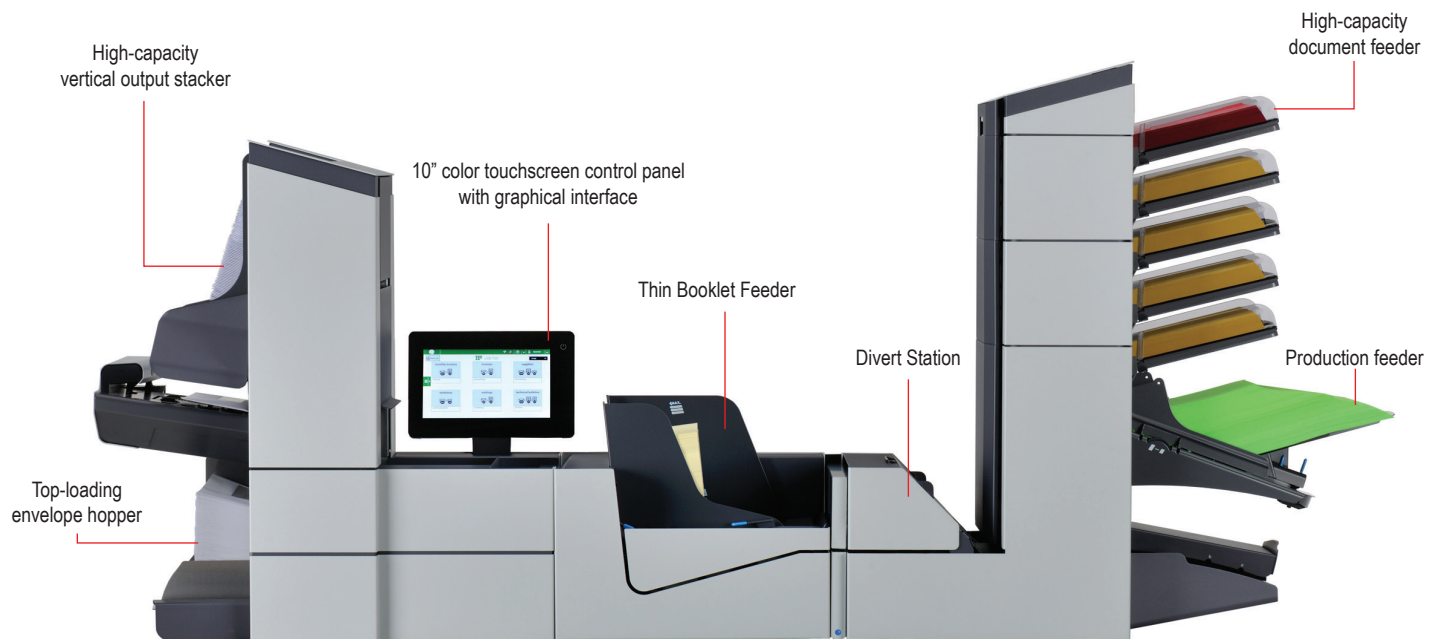
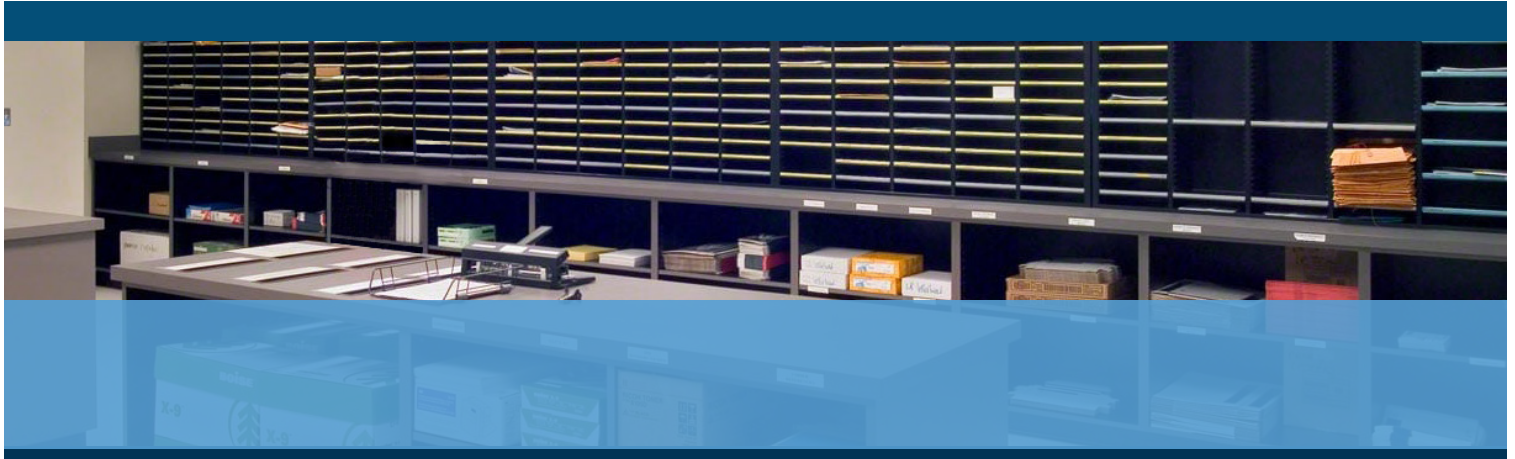




6608 Series

MODULAR INSERTER SOLUTION



- Modular, 10 configurations available
- High-capacity vertical output stacker
- 10" color touchscreen control panel
- Up to 50 programmable jobs
- Top-loading envelope hopper

FORMAX[®]

www.formax.com

Local Dealer:

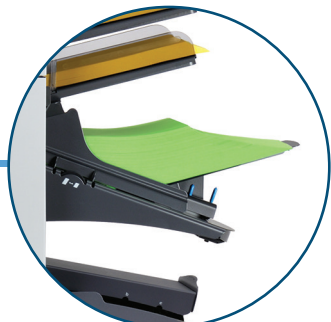
The **6608 Series** models are available with 2 to 7 stations. Various input configurations include a **high-capacity document feeder** for up to 725 sheets, 1 or 2 high-capacity **production feeders**, **standard and special feeders**, **short feed trays**, and one or two **thin booklet feeders**. Standard features include a **10" touchscreen with envelope and paper presence sensors**, a **high-capacity vertical output stacker**, a **top-loading envelope hopper**, **AutoSet™**, a **divert station**, and the ability to store **up to 50 custom jobs**. Options include a **full-page CIS Scanner** to read OMR, 1D Barcodes, 2D Data Matrix, and QR codes, printed in any location on a document.



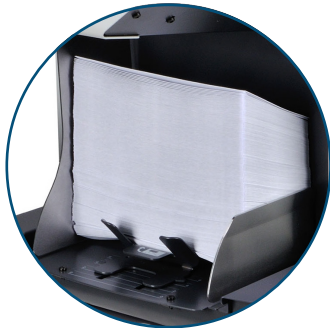
10" Intuitive Color Touchscreen
Graphic interface for easy setup, with paper and envelope presence sensors



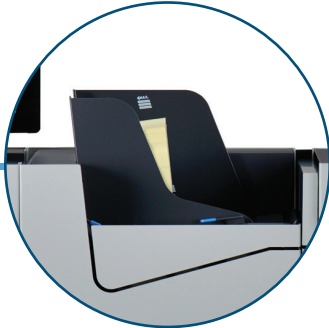
High-Capacity Vertical Stacker
Holds up to 500 filled envelopes in a neat, sequential order



Optional Production Feeder
Holds up to 325 BREs or 1,200 inserts up to 6" long



Top-Loading Envelope Hopper
Holds up to 500 envelopes with on-the-fly reloading for continuous operation



Optional Thin Booklet Feeder
1 or 2, each dedicated feeder inserts BREs or booklets up to 2.5mm thick

STANDARD FEATURES

- 10" intuitive color touchscreen
- Modular flexibility
- AutoSet™ one-touch setup
- Envelope & paper presence sensors
- High-capacity vertical output stacker
- Up to 50 programmable jobs
- Handles a variety of envelope sizes
- Large, top-loading envelope hopper
- C, Z, half, double parallel, no fold
- Daily mail mode
- Multi-feeding
- Cascade mode
- Folds up to 10 sheets at once
- Variable insert capability
- Eco mode
- Double document detection
- Divert station

OPTIONS

- CIS scanner
- Thin booklet feeder
- Production feeders
- Side exit trays
- OMR, BCR, and OCR
- Short feed trays
- 402 Series Jogger

** Paper & envelope specifications may vary. All media must be tested*

*** Bottom-address documents can be processed only in half and z-fold modes, up to 5 sheets*

SPECIFICATIONS

| | |
|----------------------------|---|
| Speed | Up to 4,300 pieces per hour |
| Duty Cycle | Up to 80,000 pieces per month |
| Feeder Capacity | Up to 325 sheets, per feeder |
| Envelope Hopper | Up to 325 envelopes, top-loading |
| Vertical Output Stacker | Up to 500 filled envelopes |
| Sheet Size* | 3.5" - 14" H x 5" - 9" W (89 x 356 x 229mm) |
| Programmable Jobs | Up to 50 |
| Envelope Size* | 6.3" - 9.7" L x 3.5" - 6.3" W (160 - 246 x 89 - 160mm) |
| Dimensions | 60" L x 31" H x 18" D (152 x 79 x 46cm) |
| With 1 Thin Booklet Feeder | 79" L x 31" H x 18" D (200 x 79 x 46cm) |
| Weight | Approx. 242 lbs (110kg) |
| Power | 100V/120V AC 50/60Hz |
| Safety Certifications | UL, CE, approved |