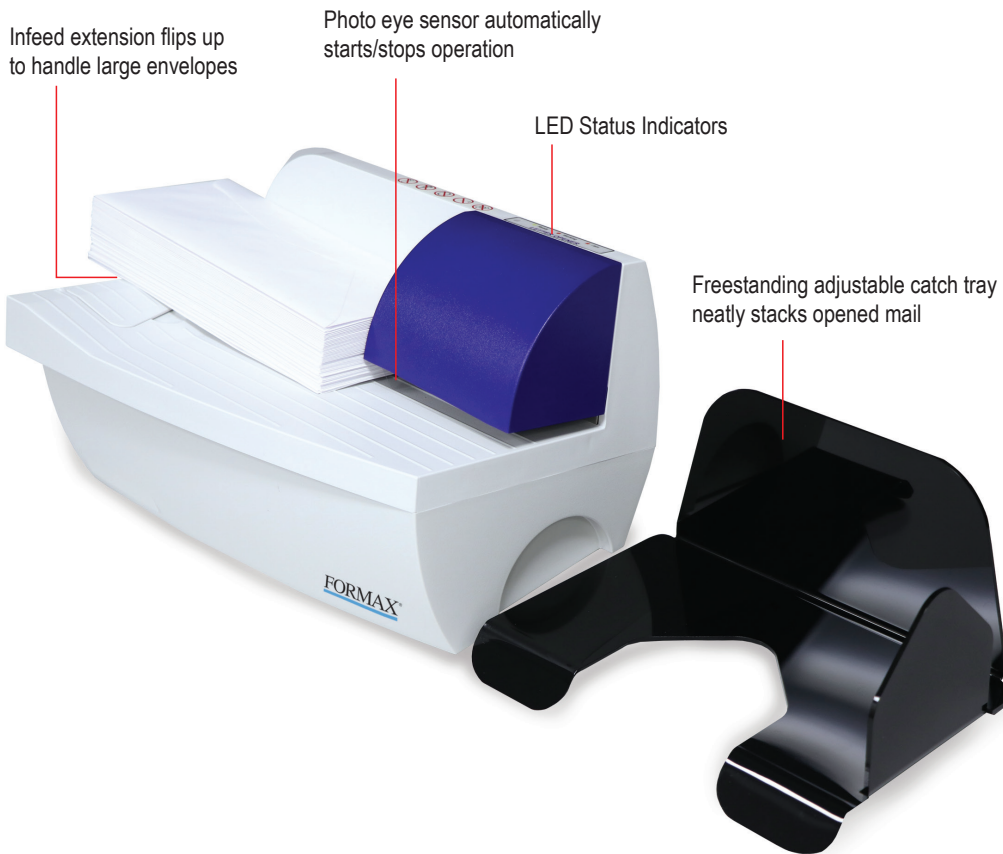
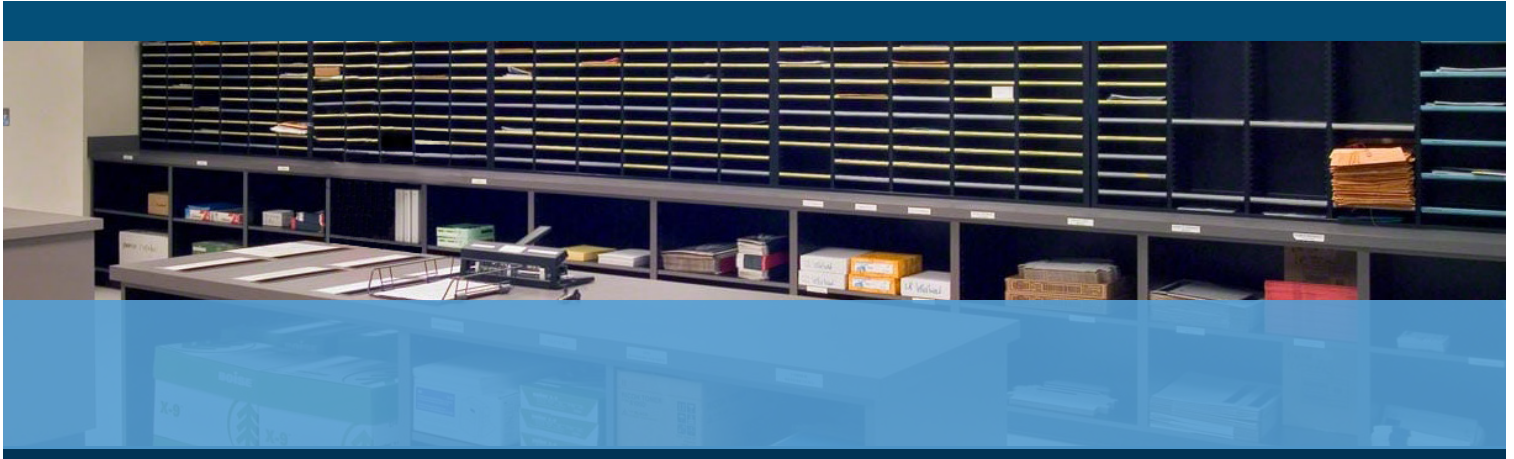




FD 442

ENVELOPE OPENER



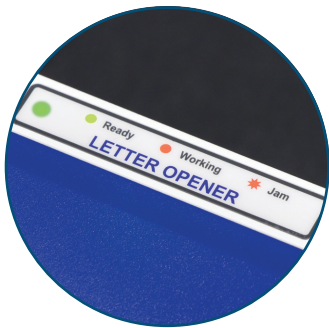
- Opens up to 200 envelopes per minute
- Processes envelopes up to 3/16" thick
- Handles envelopes from #10 to 10" x 13" flats
- Photo eye for automatic start/stop
- Neatly slits the edge, with no messy paper scraps

FORMAX®

www.formax.com

Local Dealer:

Maximize productivity and distribute incoming mail faster with the **FD 442 Envelope Opener**. It's easy to use right out of the box with a host of user-friendly features. Within seconds mail is open and ready, thanks to the **photo sensor eye** which **automatically starts and stops** the feed tires. The innovative cutting mechanism **slits one side of the envelope from end to end**, so the contents are left undamaged, with no messy paper scraps to clean up. The FD 442 **opens mixed mail up to 4mm thick, in sizes up to 10" x 13"**. Simply flip up the convenient **infeed extension** to support large envelopes, and adjust the **freestanding catch tray** for neat stacking. With a speed of **up to 200 envelopes per minute**, your mail will be ready in no time.



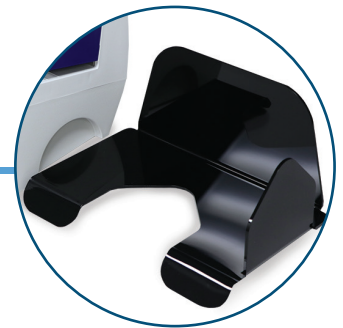
LED Status Indicators

LED indicators show if the envelope opener is powered, running, or jammed



Infeed Extension

Easy-to-use infeed extension supports large envelopes up to 10" x 13"



Adjustable Catch Tray

Freestanding catch tray neatly stacks opened mail

STANDARD FEATURES

- Photo eye for automatic start/stop
- Neatly slits the envelope edge, no messy paper scraps
- LED status indicators
- Handles envelopes from #10 to 10" x 13" flats
- Adjustable freestanding catch tray
- Opens up to 200 envelopes per minute
- Bottom feeder for up to 15 envelopes per stack
- Compact and quiet, ideal for the office
- Infeed extension opens to handle larger envelopes

SPECIFICATIONS

Speed	Up to 200 envelopes per minute
Infeed Style	Bottom feed
Infeed Capacity	Approximately 15 envelopes per stack
Envelope Sizes	Up to 10" x 13" (254 x 330mm)
Envelope Thickness	Up to 3/16" (4mm)
Automatic Start/Stop	Photo eye sensor
Self-Adjusting Feeding	Adapts to various envelope thicknesses
Dimensions	13"L x 9" D x 7" H (330 x 227 x 178mm)
Weight	10 lbs (4.5kg)
Power	100-240 VAC 50/60 Hz